

**TIIG**  
INJURY SURVEILLANCE IN THE NORTH WEST OF ENGLAND

**ROYAL LANCASTER INFIRMARY EMERGENCY DEPARTMENT**

**MONTHLY BULLETIN: OCTOBER 2013 TO SEPTEMBER 2014**

This bulletin provides a breakdown of all injury attendances to Royal Lancaster Infirmary Emergency Department (ED) between October 2013 and September 2014.

During the twelve month period there were 14,414 injury attendances to the ED. The month with the highest number of attendances, calculated as a daily average, was September 2014 with (48 per day) compared to January 2014, the month with the lowest (31 per day; **Figure 1**).

There were more males than females attending the ED (males=8,002; 56%; **Figure 1**). There were equal proportions (29% each) of attendees aged between 15 and 29 years (n=4,251) and between 30 and 59 years (n=4,227; **Figure 2**).

**Table 1** shows the injury group of attendances between October 2013 and September 2014. Over three-quarters (76%) were categorised as 'other' injury (n=10,914). Sports injury accounted for over one in ten (n=1,922; 13%) attendances followed by 8% due to road traffic collisions (n=1,100).

The referral source to the ED is detailed in **Table 2**. Seven in ten (70%) self-referred to the ED (n=10,043) while 16% were referred by the emergency services (n=2,356).

**Table 3** illustrates the incident location. The primary location was in a public place (n=5,318; 37%) followed by just over three in ten (31%) which occurred at home (n=4,474). Furthermore, 9% occurred at work (n=1,232) and 7% occurred in an educational establishment (n=1,072).

The discharge destination for ED attendances is displayed in **Table 4**. Two-fifths (40%) were discharged from hospital with no follow-up treatment required (n=5,707). Over one in five (23%) were referred to the fracture clinic (n=3,244) while 17% were discharged from hospital with follow-up care to be provided by a General Practitioner (GP; n=2,391) and one in ten (10%) were admitted to hospital (n=1,397).

**Assault attendances**

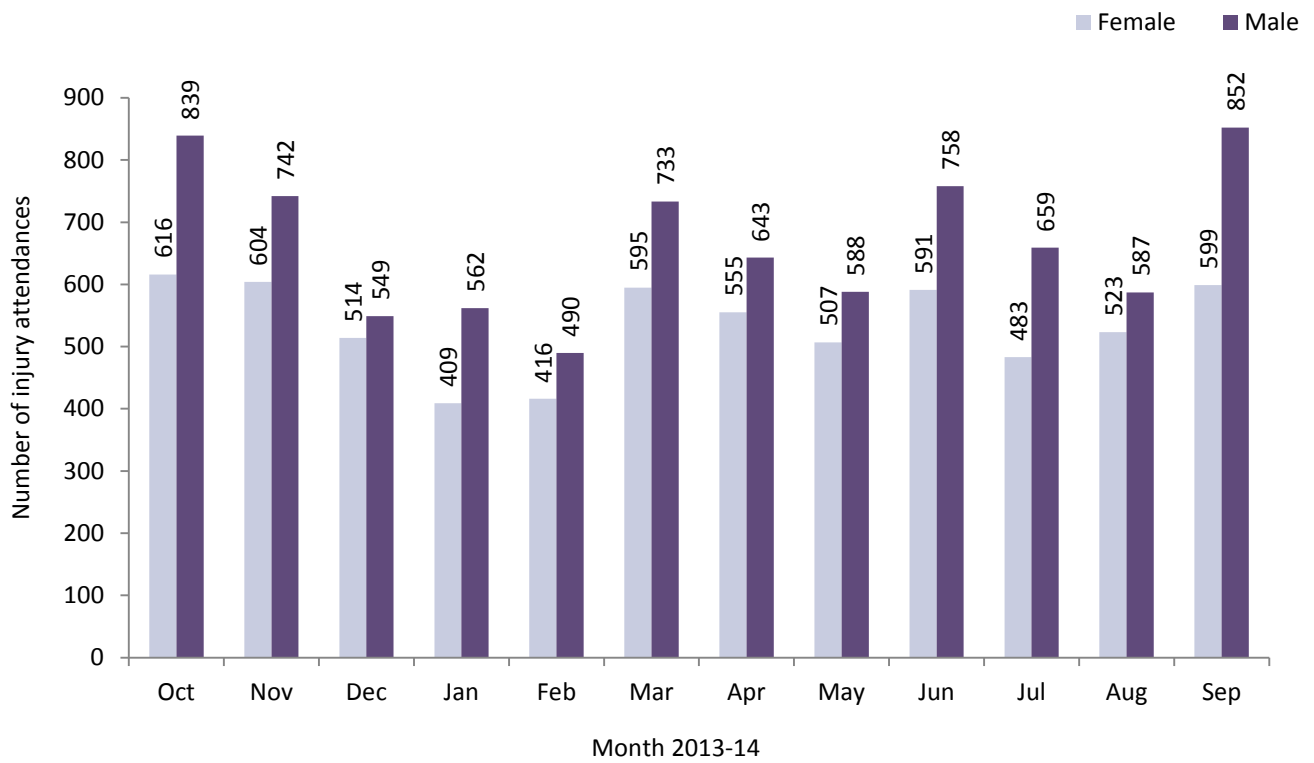
Between October 2013 and September 2014 there were 344 assault-related injury attendances to Royal Lancaster Infirmary ED.

The majority (72%) of attendees presenting at the ED with assault-related injuries were male (n=249; **Figure 3**). Just over half (52%) were aged between 15 and 29 years (n=179) while 40% were aged between 30 and 59 years (n=138) (**Table 5**).

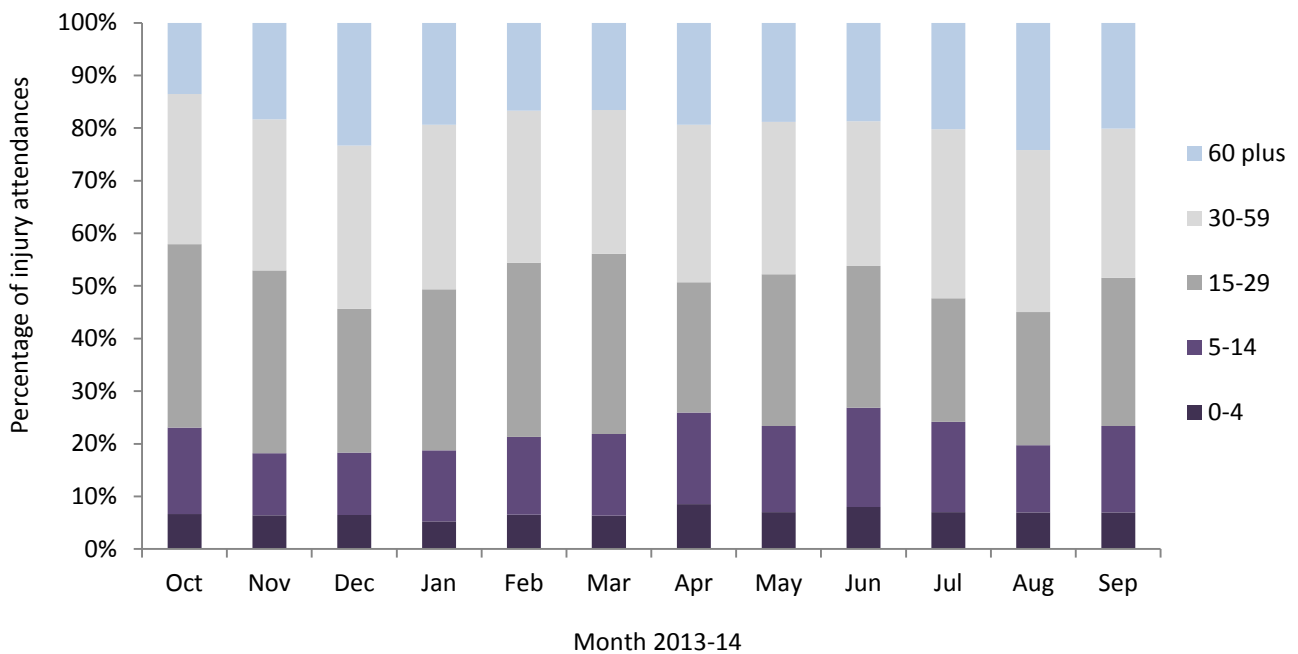
The assault location is shown in **Table 6**. More than half (53%) of incidents occurred in a public place (n=181) and 16% occurred in the home (n=54).

**Table 7** illustrates the disposal method of assault attendances. Just over two in five (41%) were discharged from hospital with no follow-up treatment required (n=141) compared to just under two in five (39%) who required follow-up treatment (n=135). One in ten (10%) were admitted to hospital (n=33).

**Figure 1: ED injury attendances by gender and month, October 2013 to September 2014**



**Figure 2: ED injury attendances by age group and month, October 2013 to September 2014**



**Table 1: ED injury attendances by injury group and month, October 2013 to September 2014<sup>^</sup>**

Injury group	Oct	Nov	Dec	Jan	Feb	Mar	Apr	May	Jun	Jul	Aug	Sep	Total	%
Other injury	1075	984	837	739	669	945	928	855	1048	892	874	1068	10914	76%
Sports injury	252	200	116	120	146	235	148	126	166	109	96	208	1922	13%
Road traffic collision	81	112	79	78	73	102	85	85	104	100	90	111	1100	8%
Assault	37	34	26	27	11	35	27	22	23	25	36	41	344	2%
Deliberate self-harm	10	16	5	7	7	11	10	7	8	16	14	23	134	1%
<b>Total</b>	<b>1455</b>	<b>1346</b>	<b>1063</b>	<b>971</b>	<b>906</b>	<b>1328</b>	<b>1198</b>	<b>1095</b>	<b>1349</b>	<b>1142</b>	<b>1110</b>	<b>1451</b>	<b>14414</b>	<b>100%</b>

<sup>^</sup> Due to low numbers, firework injuries have been included in the 'other' injury category (n<=5).

**Table 2: ED injury attendances by referral source and month, October 2013 to September 2014<sup>1</sup>**

Referral source	Oct	Nov	Dec	Jan	Feb	Mar	Apr	May	Jun	Jul	Aug	Sep	Total	%
Self-referral	1058	960	752	663	694	939	835	772	981	757	716	916	10043	70%
Emergency services	194	252	211	148	111	202	176	158	177	211	229	287	2356	16%
Other	146	94	78	120	82	124	147	133	143	138	143	210	1558	11%
Educational establishment	23	11	8	16	8	27	6	14	25	17	0	10	165	1%
Work	15	9	***	11	***	13	13	6	12	***	13	7	109	1%
GP	6	11	***	6	***	9	8	6	5	***	***	9	76	1%
Police	5	<10	***	***	***	6	7	***	<10	10	***	5	58	0%
Health care provider	8	***	***	***	***	8	6	***	***	***	***	7	49	0%
<b>Total</b>	<b>1455</b>	<b>1346</b>	<b>1063</b>	<b>971</b>	<b>906</b>	<b>1328</b>	<b>1198</b>	<b>1095</b>	<b>1349</b>	<b>1142</b>	<b>1110</b>	<b>1451</b>	<b>14414</b>	<b>100%</b>

**Table 3: ED injury attendances by incident location and month, October 2013 to September 2014<sup>1</sup>**

Incident location	Oct	Nov	Dec	Jan	Feb	Mar	Apr	May	Jun	Jul	Aug	Sep	Total	%
Public place	513	499	369	356	304	467	446	434	513	415	462	540	5318	37%
Home	432	436	401	287	258	396	381	325	427	319	365	447	4474	31%
Other	224	205	135	132	159	205	212	189	213	234	188	222	2318	16%
Work	151	115	82	96	89	118	95	76	90	<110	<95	118	1232	9%
Educational establishment	135	91	76	100	96	142	64	71	106	<70	***	124	1072	7%
<b>Total</b>	<b>1455</b>	<b>1346</b>	<b>1063</b>	<b>971</b>	<b>906</b>	<b>1328</b>	<b>1198</b>	<b>1095</b>	<b>1349</b>	<b>1142</b>	<b>1110</b>	<b>1451</b>	<b>14414</b>	<b>100%</b>

**Table 4: ED injury attendances by discharge destination and month, October 2013 to September 2014<sup>1</sup>**

Discharge destination	Oct	Nov	Dec	Jan	Feb	Mar	Apr	May	Jun	Jul	Aug	Sep	Total	%
Discharged – no follow-up	539	529	448	399	394	515	482	407	560	431	449	554	5707	40%
Fracture clinic	323	306	192	204	214	304	285	275	333	269	222	317	3244	23%
Discharged - follow-up care by GP	254	244	189	187	117	221	184	175	189	198	194	239	2391	17%
Admitted	138	124	108	82	81	111	115	114	122	119	109	174	1397	10%
Out-patient clinic	64	46	50	27	41	54	35	44	56	31	50	45	543	4%
Follow-up within ED	47	44	43	23	34	57	43	25	31	36	24	50	457	3%
Left before being treated	49	17	9	18	12	39	33	35	32	32	25	31	332	2%
Other health care professional	17	18	9	16	7	13	7	7	15	14	16	11	150	1%
Transferred to other health care provider	13	13	13	11	<10	10	9	9	<10	6	15	23	132	1%
Left having refused treatment	6	***	***	***	0	***	***	***	5	5	***	***	30	0%
Other	5	***	***	***	***	***	***	***	***	***	<10	***	<30	0%
Died in department	0	0	0	0	0	***	0	0	0	0	0	***	***	0%
<b>Total</b>	<b>1455</b>	<b>1346</b>	<b>1063</b>	<b>971</b>	<b>906</b>	<b>1328</b>	<b>1198</b>	<b>1095</b>	<b>1349</b>	<b>1142</b>	<b>1110</b>	<b>1451</b>	<b>14414</b>	<b>100%</b>

<sup>1</sup> Please note that all numbers less than five have been suppressed (with \*\*\*) in line with patient confidentiality. If there is only one number less than five in a category then two numbers have been suppressed to prevent back calculations from totals.

Percentages may not add up to 100% due to rounding.

## ASSAULTS

Figure 3: ED assault attendances by gender and month, October 2013 to September 2014<sup>2</sup>

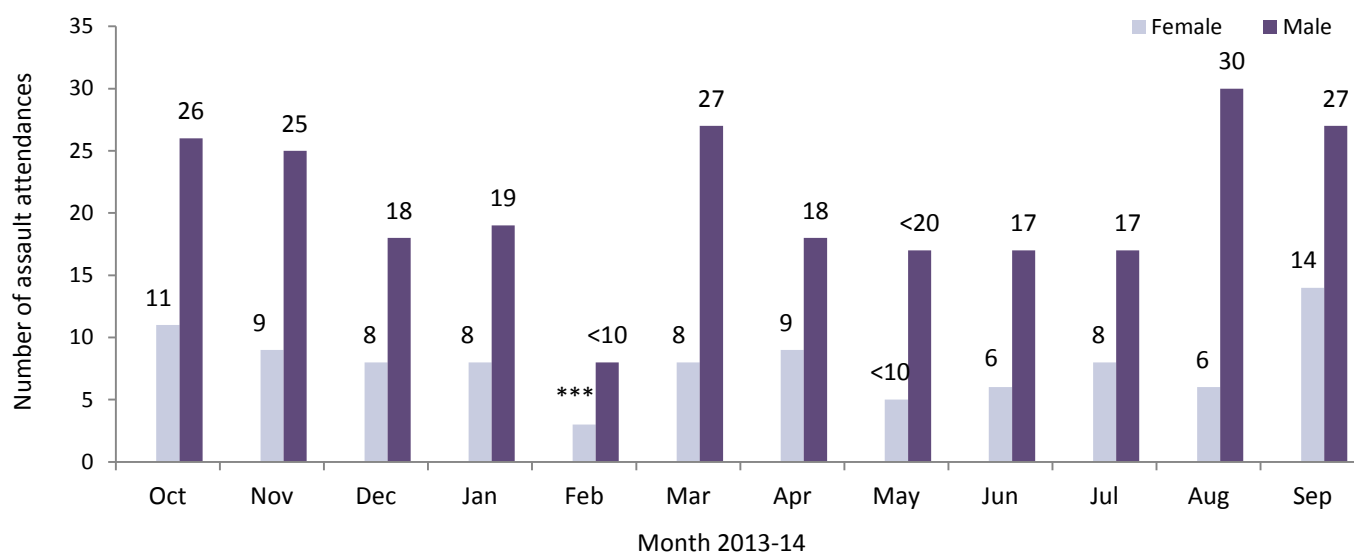


Table 5: ED assault attendances by age group and month, October 2013 to September 2014<sup>§2</sup>

Age group	Oct	Nov	Dec	Jan	Feb	Mar	Apr	May	Jun	Jul	Aug	Sep	Total	%
5-14	***	***	***	0	0	***	***	***	***	***	***	***	19	6%
15-29	15	19	<15	19	<10	23	8	12	12	10	19	23	179	52%
30-59	15	13	13	8	***	<15	17	<10	7	12	<20	<20	138	40%
60 plus	***	***	0	0	0	0	***	0	***	***	0	0	8	2%
<b>Total</b>	<b>37</b>	<b>34</b>	<b>26</b>	<b>27</b>	<b>11</b>	<b>35</b>	<b>27</b>	<b>22</b>	<b>23</b>	<b>25</b>	<b>36</b>	<b>41</b>	<b>344</b>	<b>100%</b>

<sup>§</sup> There were no assault attendances in the 0-4 years category.

Table 6: ED assault attendances by incident location and month, October 2013 to September 2014<sup>2</sup>

Incident location	Oct	Nov	Dec	Jan	Feb	Mar	Apr	May	Jun	Jul	Aug	Sep	Total	%
Public place	23	19	<20	17	***	16	7	9	10	15	25	22	181	53%
Other	7	9	8	5	<10	12	10	<10	7	7	5	8	92	27%
Home	<10	<10	***	5	0	<10	5	5	<10	***	***	9	54	16%
Work	***	***	0	0	0	***	5	0	0	0	***	***	12	3%
Educational establishment	0	0	0	0	0	0	0	***	***	***	0	***	5	1%
<b>Total</b>	<b>37</b>	<b>34</b>	<b>26</b>	<b>27</b>	<b>11</b>	<b>35</b>	<b>27</b>	<b>22</b>	<b>23</b>	<b>25</b>	<b>36</b>	<b>41</b>	<b>344</b>	<b>100%</b>

Table 7: ED assault attendances by disposal method and month, October 2013 to September 2014<sup>2</sup>

Disposal method	Oct	Nov	Dec	Jan	Feb	Mar	Apr	May	Jun	Jul	Aug	Sep	Total	%
Discharged	8	12	9	19	6	14	9	10	9	8	17	20	141	41%
Follow-up	21	18	14	6	5	13	12	7	9	9	13	8	135	39%
Other	***	***	***	***	0	***	<10	***	***	<10	<10	7	35	10%
Admitted	<10	***	***	***	0	***	***	***	***	***	***	6	33	10%
<b>Total</b>	<b>37</b>	<b>34</b>	<b>26</b>	<b>27</b>	<b>11</b>	<b>35</b>	<b>27</b>	<b>22</b>	<b>23</b>	<b>25</b>	<b>36</b>	<b>41</b>	<b>344</b>	<b>100%</b>

Published January 2015

Trauma and Injury Intelligence Group

Centre for Public Health, Faculty of Education, Health and Community, Liverpool John Moores University,  
2nd Floor, Henry Cotton Building, Liverpool L3 2ET

T: 0151 231 4498 | E: [tiig@ljmu.ac.uk](mailto:tiig@ljmu.ac.uk) | W: [www.tiig.info](http://www.tiig.info) and [www.cph.org.uk](http://www.cph.org.uk) | Twitter: [www.twitter.com/tiig\\_cph](https://www.twitter.com/tiig_cph)

<sup>2</sup> Please note that all numbers less than five have been suppressed (with \*\*\*) in line with patient confidentiality. If there is only one number less than five in a category then two numbers have been suppressed to prevent back calculations from totals.